

# CFCC UPDATE: STANDARDS, PRAXIS EXAMINATION AND OTHER NEWS

Todd R. Philbrick, CAE, ASHA  
Kathy Pruner, Educational Testing Services  
October 21, 2016

---

---

---

---

---

---

---

---

## Disclosures

- ▶ Todd Philbrick is an ASHA employee and ex-officio to the CFCC and as such has a financial relationship with ASHA as his employer. He has no nonfinancial relationships to disclose.
- ▶ Kathy Pruner is an employee of ETS and as such has a financial relationship with ETS as her primary employer. She has no nonfinancial relationships to disclose.

---

---

---

---

---

---

---

---

## Topics To Be Covered

CFCC

- ▶ Certification Statistics
- ▶ Certification Standards
- ▶ Certification Disclosure
- ▶ International Applicants
- ▶ Certification Maintenance
- ▶ Specialty Certification

ETS

- ▶ New SLP Praxis
- ▶ Audiology Praxis
- ▶ Upcoming Events

---

---

---

---

---

---

---

---

## 2016 CFCC Members

<u>Chair</u>	<u>SLPs</u>
Dan Halling, CCC-A	Nancy Alarcon, CCC-SLP
<u>Chair-Elect</u>	Kathleen Gregory, CCC-SLP
Vivian Siskin, CCC-SLP	Carol Ann Raymond, CCC-SLP
	Amy Thorpe Wiley, CCC-SLP
<u>Vice Chair for Audiology</u>	<u>Board Certified Specialists</u>
Diane Sabo, CCC-A	Lynn Flahive, CCC-SLP
	Linda Mackay, CCC-SLP
<u>Vice Chair for SLP</u>	<u>Public Member</u>
Nancy Alarcon, CCC-SLP	Diane Yeager
	Lee Reeves
<u>Audiologists</u>	
Sue Ann Erdman, CCC-A	
Mary Sue Fino-Szumski, CCC-A	
Michelle Kraskin, CCC-A	
Lisa Rickard, CCC-A	

---

---

---

---

---

---

---

---

---

---

## 2017 CFCC Members

<u>Chair</u>	<u>SLPs</u>
Vivian Siskin, CCC-SLP	Carol Ann Raymond, CCC-SLP
<u>Chair-Elect</u>	Linda Mackay, CCC-SLP
Lynn Flahive, CCC-SLP	Barbara Moore, CCC-SLP
	Patti Solomon-Rice, CCC-SLP
<u>Vice Chair for Audiology</u>	<u>Board Certified Specialists</u>
Mary Sue Fino-Szumski, CCC-A	Lynn Flahive, CCC-SLP, BCS-CL
	Jo Puntill-Sheltman, CCC-SLP, BCS-S
<u>Vice Chair for SLP</u>	<u>Public Member</u>
Amy Thorpe Wiley, CCC-SLP	Jake Milne
	Lee Reeves
<u>Audiologists</u>	
Shanda Brashears, CCC-A	
Patricia Chute, CCC-A	
Michelle Kraskin, CCC-A	
Lisa Rickard, CCC-A	

*We will have 3 open positions for 2018!*

---

---

---

---

---

---

---

---

---

---

## CFCC Contacts

- ▶ Todd Philbrick, CFCC Ex Officio
  - ▶ [tphilbrick@asha.org](mailto:tphilbrick@asha.org)
  - ▶ Phone: 301.296.5738

---

---

---

---

---

---

---

---

---

---

## New Certification Applications

	9/30/16	2015	2014	2013	2012	2011
AUD App	459	490	436	463	470	614
SLP App	6,964	4,591	11,508	8,209	7,353	7,305
<b>Total Apps</b>	<b>8,095</b>	<b>5,877</b>	<b>12,655</b>	<b>8,672</b>	<b>7,823</b>	<b>7,919</b>
<b>Total Certified</b>	<b>7,535</b>	<b>9,466</b>	<b>8,376</b>	<b>8,072</b>	<b>7,837</b>	<b>7,775</b>

## Total CCC-A and CCC-SLP

	2015	2014	2013	2012	2011
CCC-A	12,970	12,008	11,975	12,030	11,897
CCC-SLP	156,254	148,105	141,847	135,948	130,997
Dual Cert	907	931	957	1,124	1,172
<b>Total Certified</b>	<b>170,131</b>	<b>161,044</b>	<b>153,822</b>	<b>147,978</b>	<b>142,894</b>

---

---

---

---

---

---

---

---

---

---

---

---

## SLP Standards

The 2014 Standards went into effect on 9/1/2014

- ▶ Requirement of biological, physical sciences, and standalone statistics course
  - ▶ Sample course descriptions available online
- ▶ All academics and practicum must be completed *before* beginning the clinical fellowship experience.
- ▶ Allowing alternative method supervision with pre-approval
  - ▶ Must be real time with patients (not simulations), regular real time feedback sessions with supervisors and mentors
  - ▶ In accordance with employment, state and HIPAA regulations.
- ▶ E-Signatures are now accepted for Program Director Verification Forms.
- ▶ Electronic Clinical Fellowship

---

---

---

---

---

---

---

---

---

---

---

---

## SLP Standards

New for 2016

- ▶ Up to 20% (i.e., 75 hours) of direct contact hours may be obtained through Clinical Simulations methods. Only the time spent in active engagement with the Clinical Simulations may be counted. Clinical Simulations may include the use of standardized patients and simulation technologies (e.g., standardized patients, virtual patients, digitized mannequins, immersive reality, task trainers, computer-based interactive). Debriefing activities may not be included.

Future Approved Changes:

- ▶ Supervisors and CF Mentors - 9 months full-time experience and 2 hours supervision training/CMHs/Prof Development
- ▶ Certification Maintenance - 1 of 30 CM hours in Ethics

Proposed changes to the knowledge and skills after Practice Analysis results are available in early 2017. New Standards likely for 2019.

---

---

---

---

---

---

---

---

---

---

---

---

## Audiology Standards

- ▶ The Audiology Standards last changed in 2012 and applicants must have a doctoral degree.
- ▶ A clinical supervision experience at last 1820 hours long under a CCC-A holder.
- ▶ Audiology completed its Practice Analysis Study in February 2016.
- ▶ Peer Review Proposed Changes in January

---

---

---

---

---

---

---

---

## Disclosure

- ▶ Applicants for certification, late renewal, and reinstatement are required to complete disclosure questions on the application
  - ▶ If charged with, convicted, found guilty or entered a plea of "guilty" or "nolo contendere" to several classes of misdemeanor or any felony, must submit:
    - ▶ Certified copy of each court document
    - ▶ Certified copies of pleas and/or convictions and demonstrates remediation
  - ▶ If disciplined or sanctioned (other than for insufficient continuing education) by a professional association, licensing authority/board, regulatory body, must submit:
    - ▶ Certified copy showing discipline of sanctions and remediation, if applicable
- ▶ Disclosures are evaluated as part of the certification process
- ▶ Code of Ethics requires certificate holders to report offenses to the Board of Ethics for review.

---

---

---

---

---

---

---

---

## Certification Maintenance

- ▶ You can check any certificate holders status online at [www.asha.org/certification](http://www.asha.org/certification).
- ▶ Annually on April 1<sup>st</sup> certificate holders not in compliance will be listed as "not current".
- ▶ Certificate holders must complete 30 CMHs every three years to renew.
- ▶ Certification is good for one calendar year
- ▶ ASHA randomly audits certificate holders each year and they must show certificate of participation, etc.

---

---

---

---

---

---

---

---

## Specialty Certification

- ▶ In 2014, ASHA's specialty recognition program was replaced by a clinical specialty certification program, which is overseen by the CFCC
- ▶ Clinical specialty certification will continue to be awarded by the specialty boards in:
  - ▶ Child Language and Language Disorders
  - ▶ Fluency and Fluency Disorders
  - ▶ Intraoperative Monitoring
  - ▶ Swallowing and Swallowing Disorders
- ▶ Public Comment for Autism Spectrum Disorder to begin soon.

---

---

---

---

---

---

---

---

## For More Information

- ▶ Check out the Certification page on ASHA's web site
  - ▶ Standards
  - ▶ CF Video
  - ▶ FAQs
  - ▶ Other useful information
  - ▶ [www.asha.org/certification](http://www.asha.org/certification)

---

---

---

---

---

---

---

---

## Upcoming Events

- ▶ ASHA 2016 Convention (Philadelphia):
  - ▶ Student and faculty sessions scheduled
  - ▶ Praxis Overviews
  - ▶ Certification Lounge
- ▶ AAA 2017 Conference (Indianapolis)
- ▶ CAPCSD 2017 Conference (New Orleans)

---

---

---

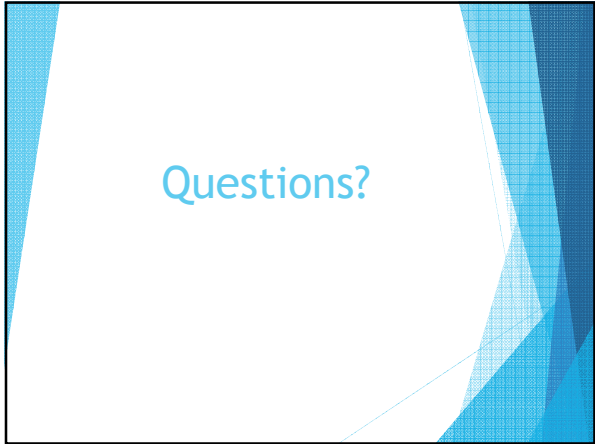
---

---

---

---

---



---

---

---

---

---

---

---

---



---

---

---

---

---

---

---

---